



Three Mill Lane, London, E3

BUTLER & STAG



Price Guide £600,000 - £650,000
Forming part of this Landmark development, enjoying an attractive waterside setting where both the River Lea and the Three Mills Wall River converge, is this sixth-floor, two-bedroom, two-bathroom apartment. Boasting full frontal views of the waterways, the apartment really allows you to fully appreciate the sense of serene living.



Leasehold

- Landmark Water-side Development
- Sixth Floor Apartment
- Two Bathrooms
- Chain Free
- Full Width Terrace
- 875 Sq / Ft Internal Living Space
- Direct Views Of River Lea
- Secure Underground Parking/Bike Storage

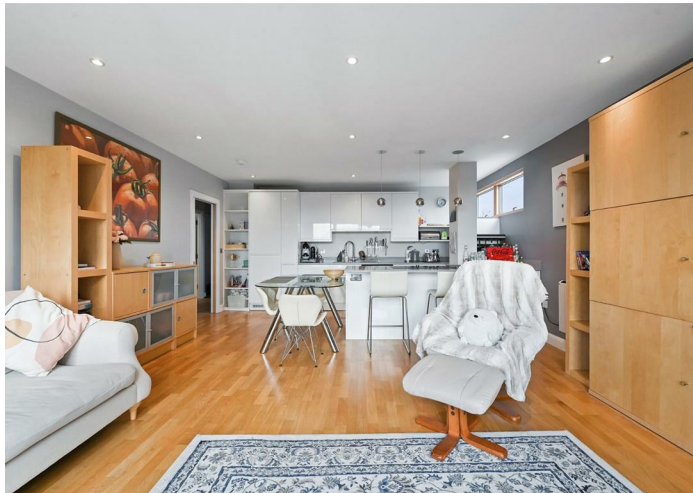
Measuring 875 Sq Ft of internal living space the property comprises a bright and expansive open plan living room that incorporates floor-to-ceiling height sliding doors leading to a private full width terrace that has uninterrupted views of the River Lea. Incorporating the kitchen area which blends a mix of modern and contemporary design with minimalism from its high gloss, handleless, cabinetry, sleek fixtures and clean lines. Completing the property are two glorious-sized bedrooms (one with en-suite and fitted wardrobes), a smart, fully tiled bathroom and generous storage cupboards.

The property also benefits from secure video entry system, gated communal spaces, access to landscaped communal gardens and ample secure bicycle storage.

The development benefits from a community feel, a dedicated Facebook group and friendly neighbours.

Three Mills is in Bromley-by-Bow in east London. It forms part of the 50-mile Lea Valley Walk. The area fuses original east London, traditional industrial architecture with the delights of the City, inspired by its rich history and unique location. With creative hubs and quirky homes, flexible office spaces and independent retail all surrounded by parks and waterways, the Island will be a hive of activity, day and night.

Nearby Stratford allows you to grab a cocktail at the Jim&Tonic or head to funky urban hangout Roof East. Situated on the roof of the Stratford Centre's multi-storey car park, the venue hosts regular open-air cinema screenings, street food, pop-up events and outdoor yoga classes. The area is also full of entertainment options. You can take in a show at the Theatre Royal Stratford East, catch the latest blockbuster at the local cinema or simply spend a day window shopping in Westfield. The options are endless.





Sixth Floor
Approximate Gross Internal Area
875 sq ft (81 sq m)

Disclaimer: Floorplan measurements are approximate and are for illustrative purposes only. While we do not doubt the floor plan accuracy and completeness, you or your advisors should conduct a careful, independent investigation of the property in respect of accuracy valuation. copyright: www.ajphoto.co.uk

